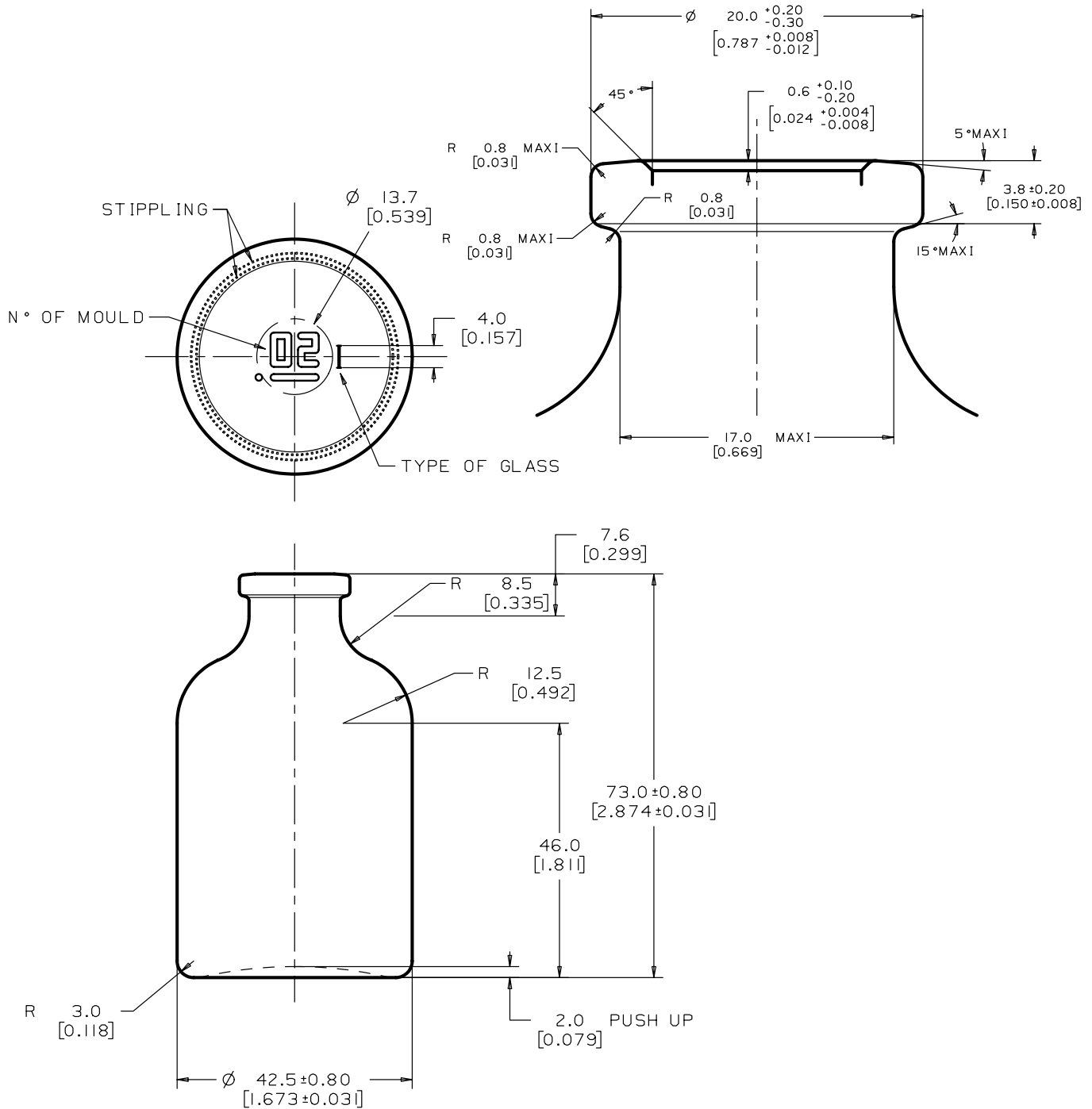



THIS PLAN CANCELS AND TAKES THE PLACE OF PRODUCTION PLAN N :

INDEX : .

VOL = US =



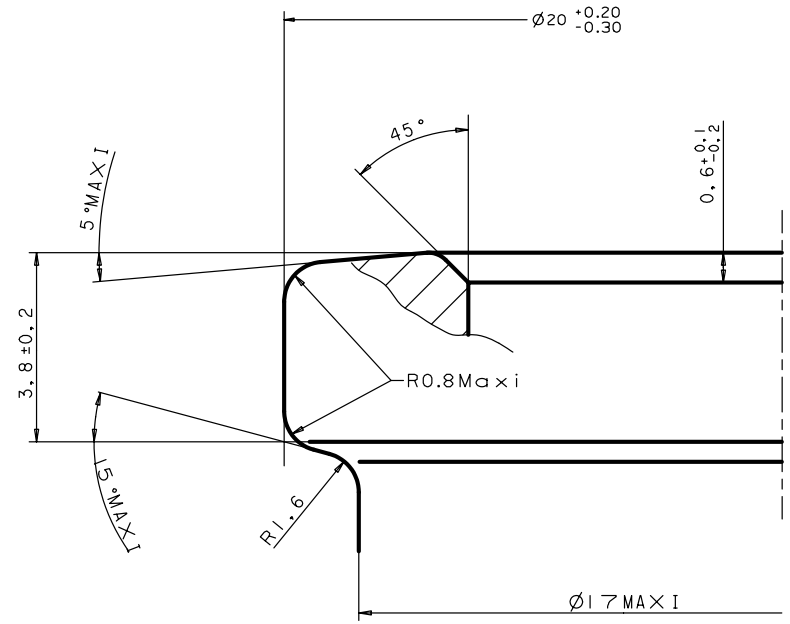
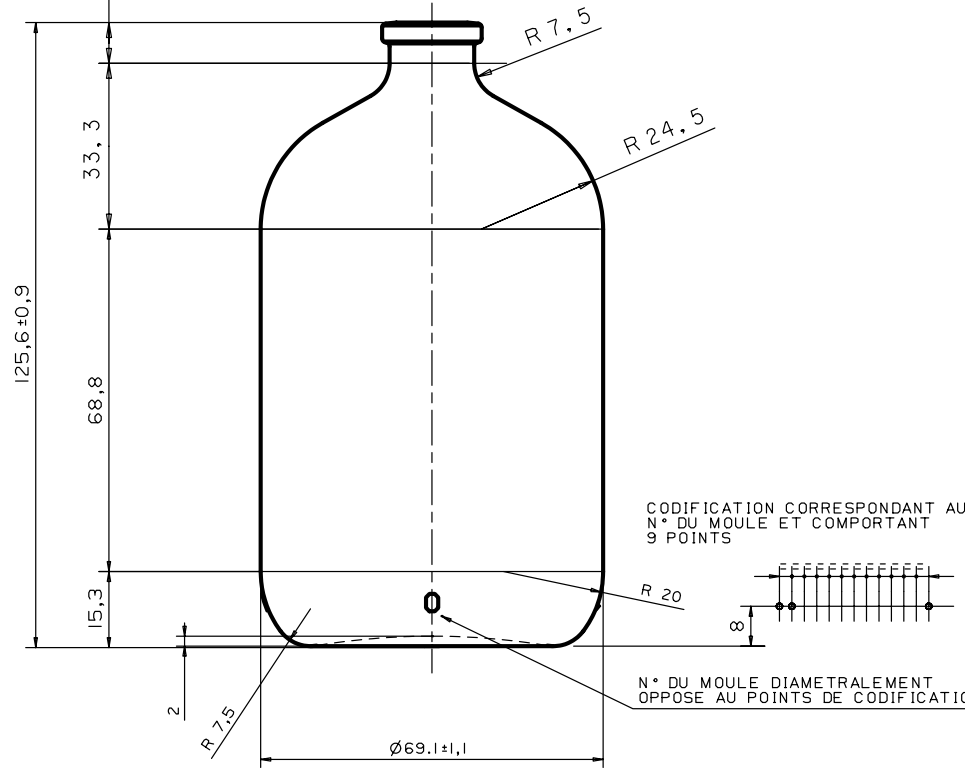
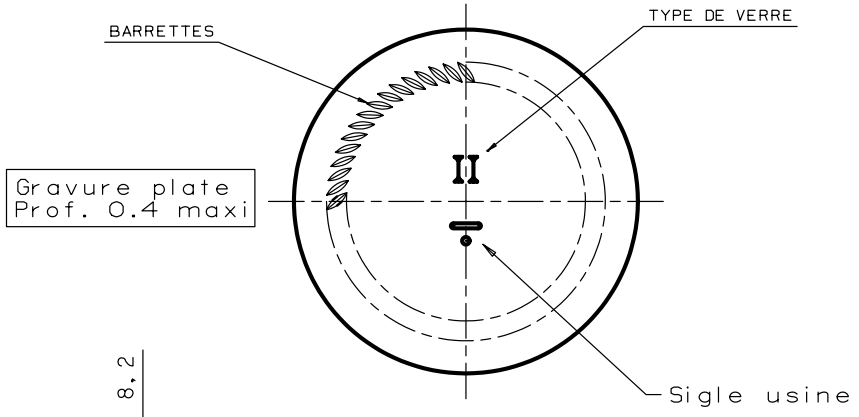
M	21-02-11	J.C.	CHANGE ENGRAVING BOTTOM (SUPP. " ISO ")	00772	48						
L	06-08-09	J.C.	CHANGE ENGRAVING BOTTOM	00772	48						
K	21-12-07	J.C.	INCH TOLERANCE HTR 0.6 - 0.008 (WAS 0.012) ADD LINE ON STIPPLING	00772	48						
J	17-09-07	J.C.	INCH TOLERANCE ∅ OPENING 0.008 (WAS ± 0.007).	00772	48						
I	23-02-99	J.C.	ENGRAVING BOTTOM NUMBER OF MOULD CENTERED	00772	48						
REP	DATE	NOTE	MODIFICATIONS	MOULD NO	INDEX						
NECK FINISH ISO 8362-4			APPROX. WEIGHT : 50	GRAMMES							
∅ OPENING : 12.6 [0.496] ± 0.2 [0.008] ON 1 MM DEPTH			BRIMFUL CAPACITY : 60	cc ± 1.8 cc							
∅ I DIMENSION MIN : 11.5 [0.452]											
 THIS DRAWING IS THE PROPERTY OF SGD AND CANNOT BE COPIED OR COMMUNICATED WITHOUT AUTORIZATION				MACHINE : 308 - 408							
				DATE : 03-03-69							
FLACON ISO 8362-4-50H				E.D.	<table border="1"> <tr><td>H</td><td>J</td></tr> <tr><td>K</td><td>L</td></tr> <tr><td>M</td><td></td></tr> </table>	H	J	K	L	M	
H	J										
K	L										
M											
14961											

00-00-772 BA

AFTER PLAN N : .

REF .

CAUSE .



E
D	17.06.98	JC	52716	01
C	18.05.98	.	GALBE : BARRETTES : N° DU MOULE AU CORPS : HAUTEUR ETAIT 124.5	52716	98
B	31.03.98	JC	PORTE NUMERO DU MOULE CODIFIE	52716	99
D	19.03.98	JC	52716	99
REP	DATE	NOTE	MODIFICATIONS				N MOULE	INDICE	
BAGUE : ISO 8362-4			POIDS : 180		GRAMMES ENVIRON		MOULE		
Ø OUVERTURE : 12.6 ±0.2			SUR 1 MM PROFONDEUR		CONTENANCE RB : 300 ML ± 5.4		52716		
Ø MINI INTERIEUR COL : 11.5									
			<h1>ANTIBIOTIQUE 250 ML.</h1>				MACHINE 201		
							DATE 05.01.98		
							PF 69997		
							<input checked="" type="checkbox"/> B <input checked="" type="checkbox"/> D		